



Chattahoochee Woodturners *Newsletter*



Volume 19, Issue 4

www.chattahoocheewoodturners.com

April 2016

APRIL MEETING

DEMONSTRATOR: Nick Cook

BIOGRAPHY: Nationally known woodturner, Nick Cook lives in Marietta, Georgia, where he owns and operates his studio. He grew up around his father's woodworking equipment and became interested in the art of woodturning in the mid-70s after several years in furniture design and manufacture.

A founding member of the American Association of Woodturners, Nick served six years on the board of directors, including one as vice president.

In addition to creating one-of-a-kind pieces and his staple gift items, Nick teaches and lectures on various woodturning topics, has written articles for several woodworking magazines, and produced two woodturning videos.

The primary materials that he now uses are maple, cocobolo, and tagua nuts. He employs a variety of woods, both domestic and exotic for his one-of-a-kind pieces. Nick's work is marketed in gift shops and galleries from coast to coast and is included in numerous corporate and private collections. You can also find Nick selling his pieces at craft fairs in the Southeast.

DEMONSTRATION: At the April meeting, I will demo how to turn a lamp base. At the workshop, members may choose an individual project piece such as a plate, bowl, or some spindle work, tops, honey dippers, etc.





Ramblings from the President

Bob Black, President 2016

Thanks to Wes Jones for bringing a truck load of oak burl for the March raffle. We had cut up some of the second maple tree from Larry Nix so we had an abundance of riches in terms of wood for the raffle. All of the wood seemed to find a home.

I hope this translates into a lot of items for The Emporium in the near future. You guys know I get nervous and jerky when looking at deadlines. I'm inclining that way on our production for The Emporium. I'm hoping for a lot of pieces to come in next week so I can relax a bit.

I hope you read the article written by Wes Jones in the April issue of the American Woodturner. It describes our Eagle Ranch program. In the article Wes points out that, "The Eagle Ranch project has brought our chapter members closer together, and our membership increased by about 10% in 2015". I'm hoping you will all see your way clear to join in the same program in 2016 as we develop Camaraderie, Community and Cohesiveness through our efforts for The Emporium. Remember this year we plan to donate half of the net and keep half for the use of Chattahoochee Woodturners. You got a suggested list of items to produce from Jerry Chandler so keep those wheels going 'round and keep the chips flying.

I think organizations such as CWT run on volunteer effort and a lot of it takes place behind the scenes and largely unnoticed. I happened upon one example at the shop by chance last month. Jerry Chandler was there cleaning up the front of the room which had a couple of years of dust. Jerry moved everything in the area and vacuumed everything. I ask you to keep an eye out for something that needs to be done and do it – don't wait on "they", as in they will take care of it.

Volunteers for the 2016 Atlanta Symposium. I got a message from Jim Hardy a few days ago. We are not setting the woods on fire volunteering to help. Keep in mind our volunteer hours go to participating in the money raised by the lathe raffle that will be paid to CWT. This is another opportunity to do well and have fun. If you want raffle tickets for the lathes see me at the meeting.

Ken Spruill, he of CWT food procurer fame, has a line on some walnut trees. Look forward to getting an email notice of a woodcutting party later in the month. If you have some special interest in limbs, crotches and so on plan on turning out helping get the tree down, hauled and cut up.

The CWT bandsaw was reported by yours truly to Ron Norris, Facilities Manager, last month to be inoperative. Ron later went to the shop to check it out. He thought to try to turn it on before starting to buy parts. Turns out the switch wants to be pushed firmly to get the saw to start. Ron pushed firmly. The saw ran. Repair cost zero. Note to me and others, push the button to get the bandsaw to run.

Bob Black

2016 OFFICERS

President, Bob Black

770-271-8871

blackbob31@gmail.com

Vice-President, Ron Grindle

770-654-5197

rgrindle911@gmail.com

Secretary, Bert Nagy

678-400-1086

bert.nagy@gmail.com

Treasurer, Ryan McDonald

404-312-1774

rmcdonald.ce98@gtalumni.org

Board Members at Large:

Wes Jones

770-972-6803

wwjones@comcast.net

Jerry Chandler

770-534-2649

Jwc43@bellsouth.net

Ken's Korner

April Menu*

Lasagna

Salad

*Meal + Drink \$5.00

2016 COMMITTEE CHAIRMEN

Membership - Bob Black

770-271-8871

blackbob31@gmail.com

Programs – Ron Grindle

770-654-5197

rgrindle911@gmail.com

Newsletter Editor - David Martin

770-891-1686

dmm5610@bellsouth.net

Food - Ken Spruill

770-536-0865

ckenrn@yahoo.com

Librarian - Ron Grindle

770-654-5197

rgrindle911@gmail.com

Raffle Master - Jack Morse

770-316-7941

johnmorse@bellsouth.net

Training - Don Griffiths

770-535-0341

r2d2griff@charter.net

Audio/Visual - Jerry Chandler

770-534-2649

Jwc43@bellsouth.net

Webmaster - Paul Proffitt

770-945-2022

pproffitt@whisperedimages.com

Photographer - Harold Wright

770-605-5832

hwright2705@gmail.com

Facilities Manager - Ron Norris

770-654-7009

norris4747@outlook.com

2016 EVENT SCHEDULE

DATE	NAME	DEMONSTRATION
April 12 th	Nick Cook	All Day Workshop: Kitchen Tools, Goblets, Tea Lights, etc.
April 12 th	Nick Cook	Turned Lamp Base
April 20 th	Don Griffiths	Hands On Workshop –
May 10 th	Don Griffiths	TBD
May 18 th	Don Griffiths	Hands On Workshop
June 14 th	Brian Simmons	TBD
June 22 nd	Don Griffiths	Hands On Workshop
July 12 th	Peggy Schmid	TBD
July 20 th	Don Griffiths	Hands On Workshop
August 9 th	TBD	TBD
August 17 th	Don Griffiths	Hands On Workshop
September 13 th	TBD	TBD
September 21 st	Don Griffiths	Hands On Workshop
October 11 th	Stephen Ogle	TBD
October 19 th	Don Griffiths	Hands On Workshop
November 8 th	TBD	TBD
November 16 th	Don Griffiths	Hands On Workshop
December 13 th	Bob Black	Christmas Celebration
December 21 st	Don Griffiths	Hands On Workshop

Videographers Schedule

April	John Moss
May	Jerry Chandler
June	Wes Jones
July	Mike Peace
August	John Moss

Hands On With Don Griffiths

April Session: The project for April 20th will be to finish hand mirror or anything else you want to turn. Hope we will have a good turnout, it will be FUN!!

Call for Woodturners. If you are interested in learning new and creative techniques in woodturning come on out. Otherwise come and enjoy some fun and fellowship with your turning buddies.

Time: 10-2 bring a lunch. \$5.00 includes materials.

March Session: The project in March was turning a spatula and a hand mirror. (**NOTE:** Turners please bring your pieces for S&T.)

Attendees: Don Griffiths, Ron Norris, Bert Nagy, Ken Spruill and David Martin.



IMPORTANT SAFTY MESSAGE FROM JERRY CHANDLER

AAW just released an eleven page woodturning safety booklet that is available to all woodturners, even if they are not AAW members. Here is a link to the AAW website listing for the booklet:

<http://www.woodturner.org/?page=SafetyGuidebook>.

FYI, AAW also has a more in-depth 64-page safety book, Safety for Woodturners, but it is only available to AAW members.

Thanks , Jerry

MARCH MEETING

Demonstrator: Bill Lynch

I've been turning about 7 yrs., consistently for 5. I started on bowls and for the last 2 yrs. have also included hollow forms. I've embellished the hollow forms to include spirals. I've recently expanded my turning interests to include some offset turning. Also I've recently started giving back to clubs by presenting demos of what I've learned to do so others may be inspired to try new ways and things to turn.

I belong to AAW, GWA and Chattahoochee turning clubs.

Demonstration: Bill gave us a very unique demonstration on how to turn an offset candle holder. This involves resetting the axis multiple times during the turning to achieve the desired effect. Great demo Bill, Thanks!!



New Members



Dave Smith



Barb Patrick



Pete Black



John Olson

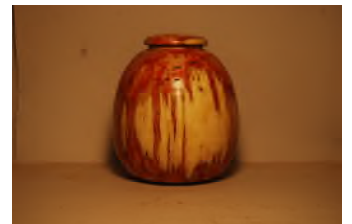
MEMBERS GALLERY



Rob Patrick



Ron Grindle



Don Willers



Don Willers



Leigh Brookes



Don Willers

MEMBERS GALLERY



Jerry Chandler



Jerry Chandler



Bill Lynch



Leigh Brookes



Bill Lynch



Bill Lynch



Wes Jones



Wes Jones



Wes Jones

Re-Sources of Interest

- For those of you with a PM3520, check out <http://mustardmonster.weebly.com/> for great tips such as making your own moveable remote safety cut off switch. This is great device when you are hollowing and working on the inside of a bowl. You can make this for a few bucks compared to more than \$100 to buy one from Powermatic.
- Here is a link to a great sharpening video by Doug Thompson, maker of Thompson tools: <http://www.youtube.com/watch?v=ZOc6giDP39A#t=29>
- Mike Peace has added several more YouTube videos to his woodturning channel at: https://www.youtube.com/user/mpax356/videos?view_as=public
- Here is a link to a youtube video showing a woodturning coming apart on the lathe. Wes Jones: <http://www.youtube.com/watch?v=FlhWF4M9CO4>
- Bob Black recommends woodcraftbands.com for bandsaw blades. They offer a blade just like the Highland Woodworking's Turners blade for green wood but 40% cheaper for an order of 5. Shipping is about \$16."
- Here is a great website where you can find free on-line videos related to turning: <http://woodturningvideos.weebly.com/>
- **WOODTURNERS WONDERS** Ken Rizza 678-442-9454 woodturnerswonders.com kjrdistributing@gmail.com CBN Wheels, Lathe Lamps and Sanding Kits
- **PEACHTREE WOODWORKING** - PWW, is a big supporter of our annual fund raising auction, and are now carrying a full line of Sorby tools
- **CRAFT SUPPLY** offers a 13% club discount for a group purchase of \$1,000 or more.
- **KLINGSPORT** provides a 10% discount to club members on anything not already tagged as a sale price



800-345-2396

www.hartvilletool.com

Hartville Tool Club Member Discount of 15% Available

- **ROCKLER:** Most of us would rather just shop online rather than driving to Sandy Springs to get a discount. I spend over three hours a day in my car coming and going so I know the frustrations in getting to our store, but keep in mind that we stock several things instore that you will never see on our website. However, if you enjoy letting the Big Brown Truck bring you packages then I would like to extend the following offer:
\$7 flat rate UPS shipping if you call the store to place your order, mention that you're a club member and get your 10% discount.
Spend over \$100 and we'll ship for FREE! (excludes powertools)
I would like to personally thank your group for the continued support of woodturning in our state and local community. If there is anything we at Rockler can do to support you all, please feel free to contact myself.

Sincerely, Jeff Slaton

Classifieds

NONE

Woodturning Instruction

The following club members give private instruction in their shops:

Mike Gibson, 770-294-3135 msgibson00@gmail.com
MichaelGibsonWoodturner.com

Dealer for Thompson Tools
Dealer for Bulldog Chucks
Dealer for Trend Diamond Sharping

Wes Jones, 770-972-6803 wwjones@comcast.net

Jack Morse, 770-316-7941 johnmorse@bellsouth.net

Mike Peace, 770-362-4308 mikepeacewoodturning.blogspot.com